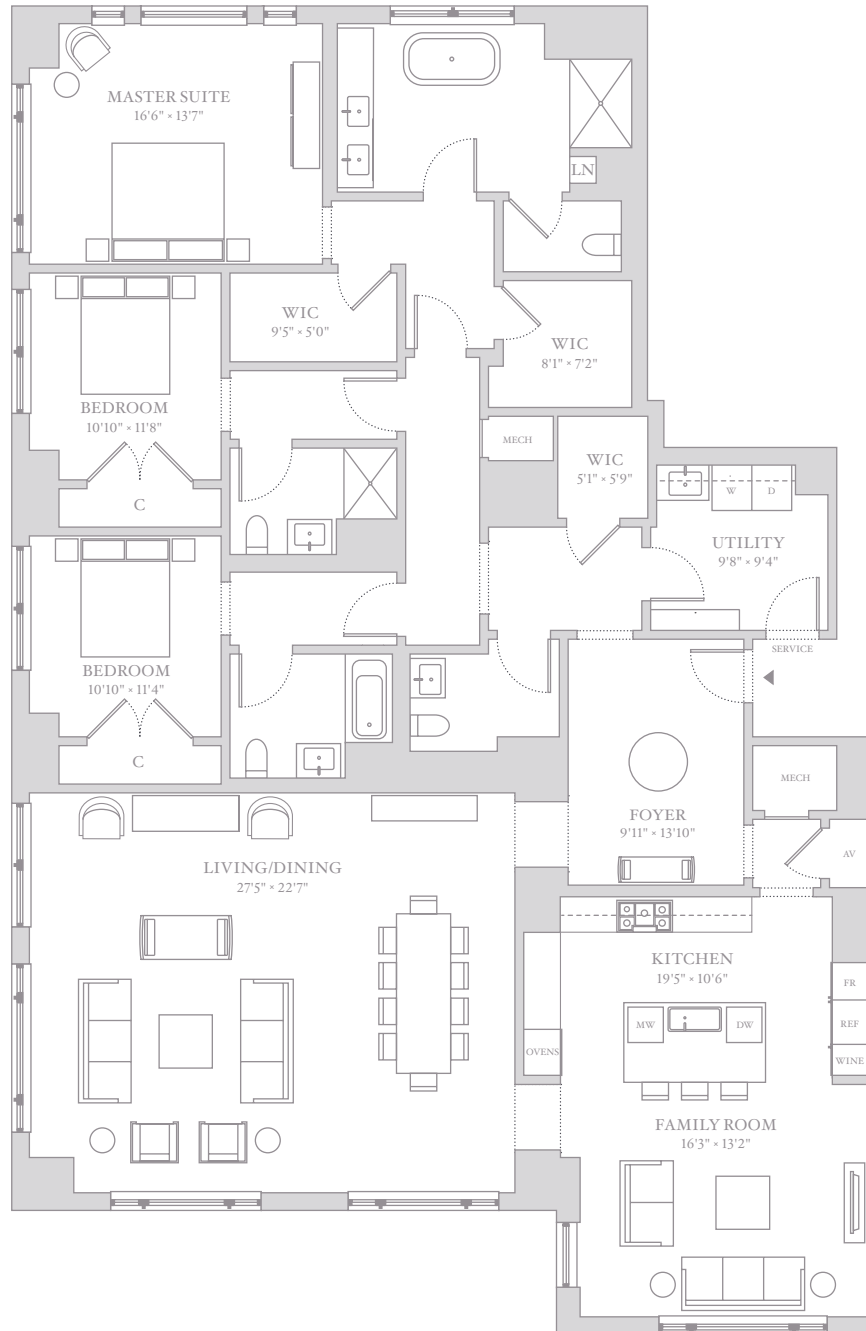


# ONE BENNETT PARK



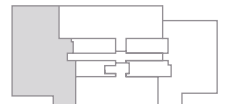
## RESIDENCE 01

FLOORS 42-48

3 BEDROOMS • 3.5 BATHROOMS • 3,080 SQ. FT. • 286 SQ. M.  
 MASTER SUITE • FAMILY ROOM • FOYER • DINING ROOM • DUAL MASTER CLOSETS  
 UTILITY ROOM • SERVICE ENTRANCE

N ↑

GRAND AVE.



SALES SUITE: 350 W HUBBARD ST, SUITE 300 • CHICAGO, IL 60654 • 312 662 1900 • ONEBENNETTPARK.COM • INFO@ONEBENNETTPARK.COM  
 EXCLUSIVE SALES AGENT RELATED REALTY • DEVELOPER LICENSE NUMBER: 2411158

FLOOR PLANS AND DIMENSIONS ARE FOR REFERENCE ONLY. LAYOUT OF ROOM SIZES AND FINISHES SHALL BE AS CONSTRUCTED. ACCURACY OF INFORMATION INCLUDING MEASUREMENTS IS NOT GUARANTEED.

